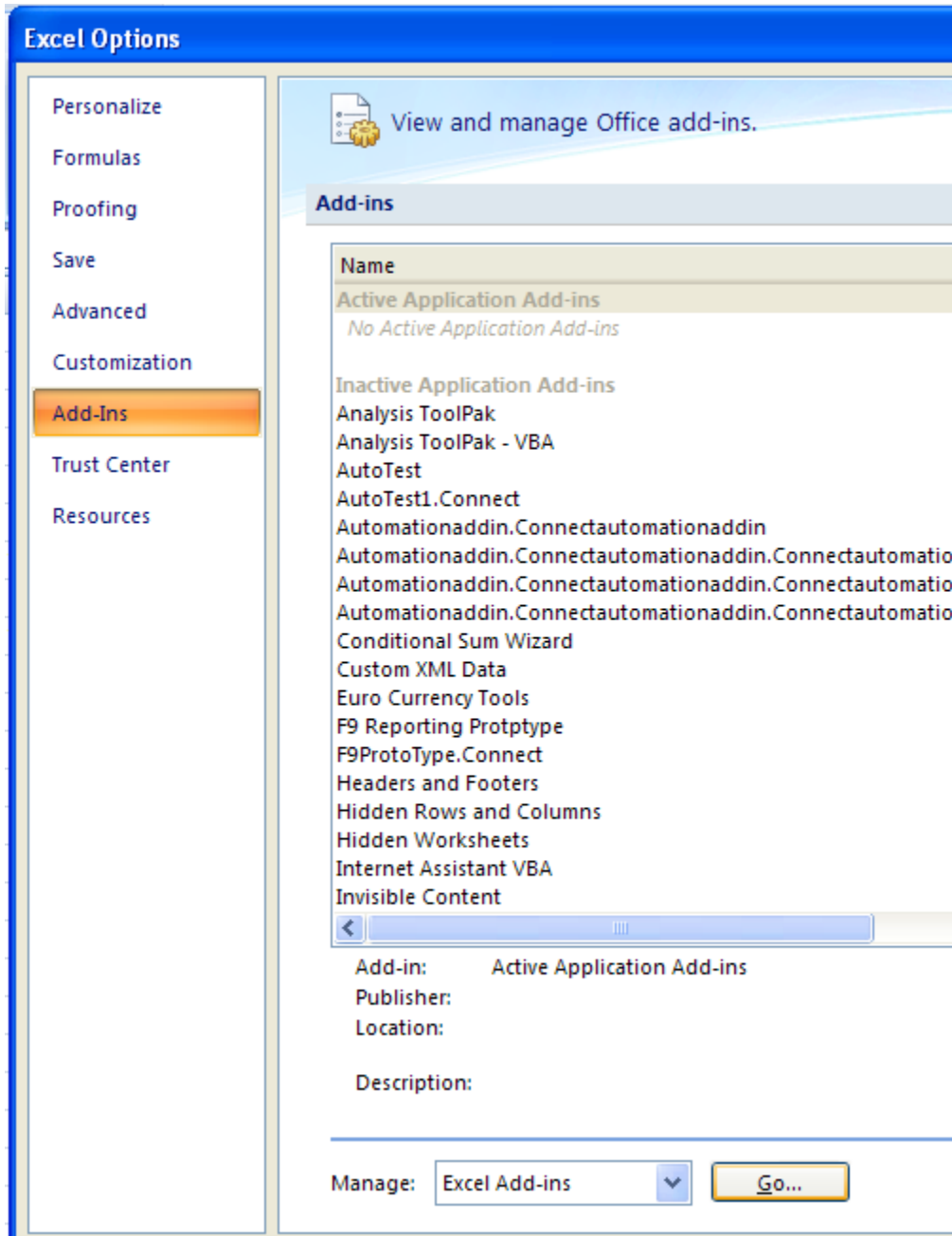


F9 and Excel 2007	2
Auto Attaching F9 in Excel 2007:	2
Adding F9 to the Trusted Publisher:	3
Trusted Locations:.....	6
Macro Settings:	7
Using F9 reports created in Excel 2007 with previous versions of Excel:.....	9

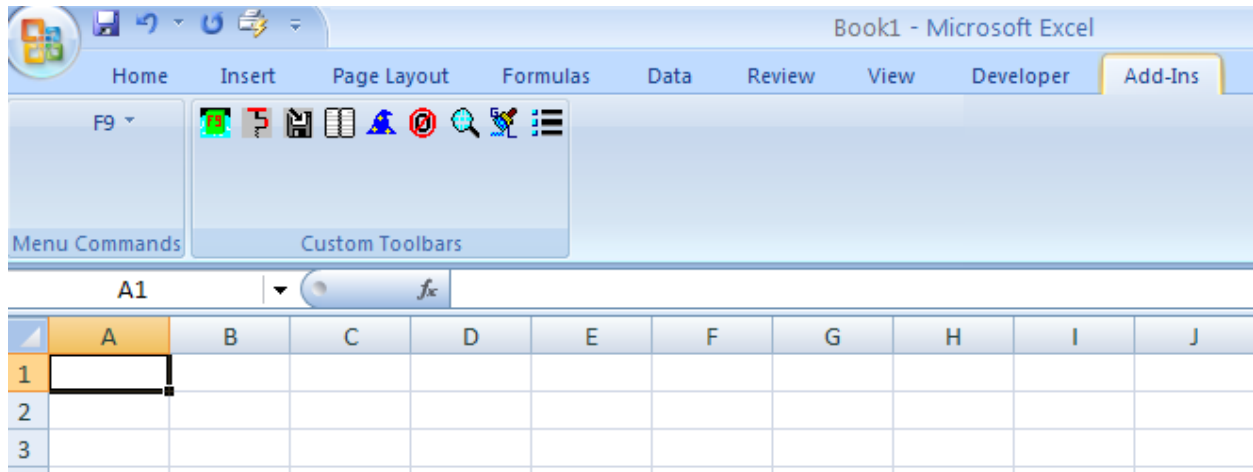
F9 and Excel 2007

Auto Attaching F9 in Excel 2007:

- 1) Click the **Microsoft Office Button**  , and then click **Excel Options**.
- 2) At the bottom of the window, choose **Excel Add-Ins** and click on 'Go' button:



- 3) In the **Add-Ins** window, Browse to the location of F9.xll, check 'F9-The Financial reporter' Add-in and click OK. Next time when you open the same window, F9 will be listed under Active Applications Add-ins.
- 4) F9 should be attached and the F9 Menu and icons should also appear within the Add-Ins tab on the Ribbon:



- 5) Next time when you start Excel, F9 should be attaching automatically.

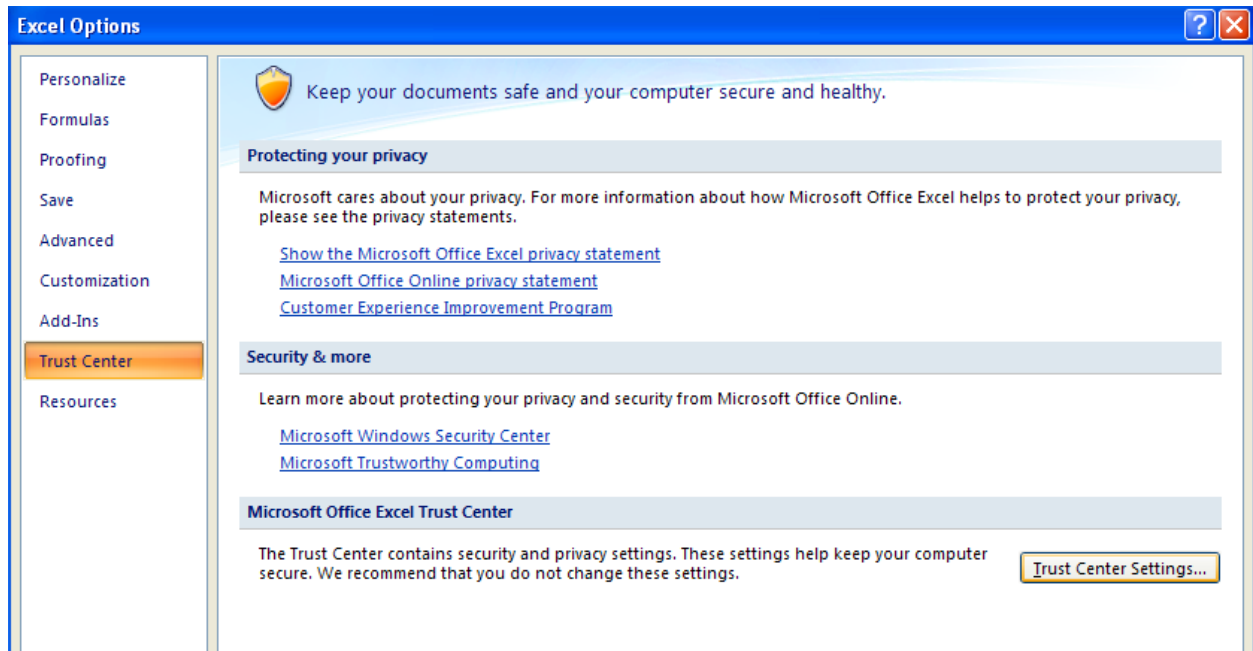
Adding F9 as a Trusted Publisher:

If F9 is not added to Trusted Publishers, you might get a message regarding a potential security problem:

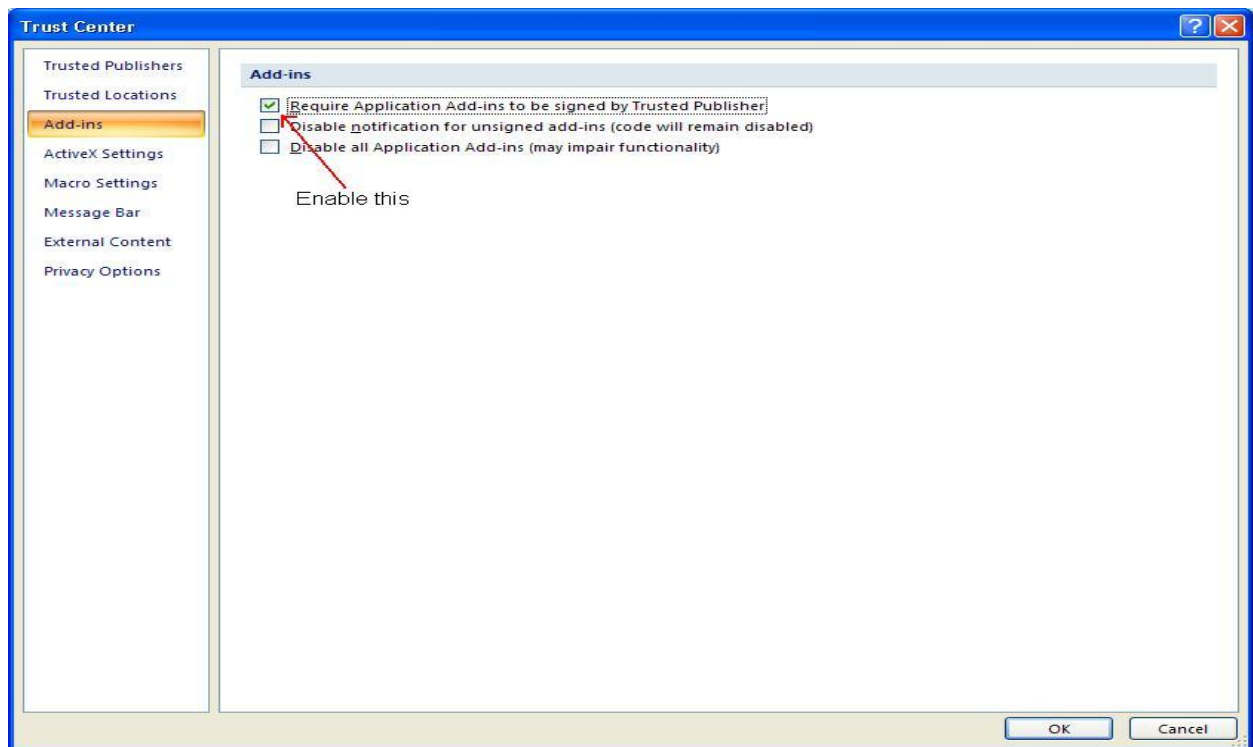


If that is the case, follow these steps:

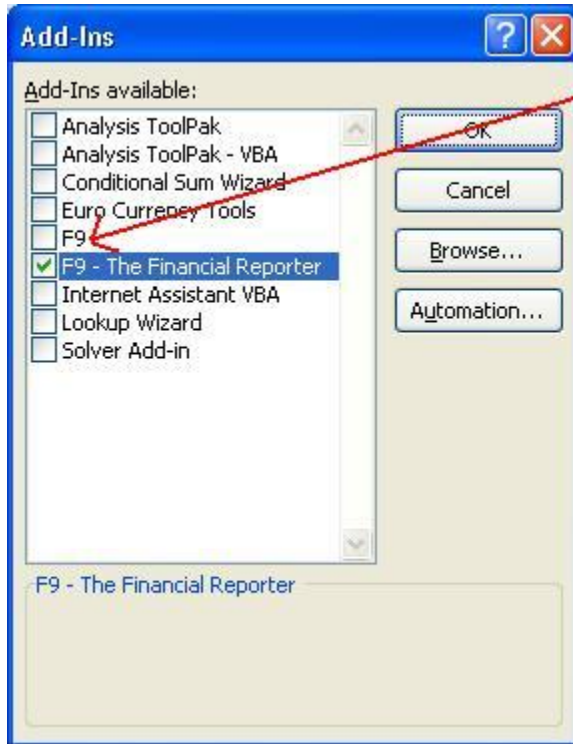
- 1) Click the **Microsoft Office Button**  , and then click **Excel Options**.
- 2) Click **Trust Center**, and then **Trust Center Settings**:



- 3) Click on **Add-ins** and check box "Require Add-Ins to be signed by Trusted Publishers":



- 4) Close Excel and open it again, you will have to auto attach F9 now. Go to Excel Options /Add-Ins / Manage Excel Add-ins / Go... You have to Browse to your F9 folder to correct F9.xll,click OK to auto attach F9 (Please refer to the previous section “Auto Attaching F9 in Excel 2007”):

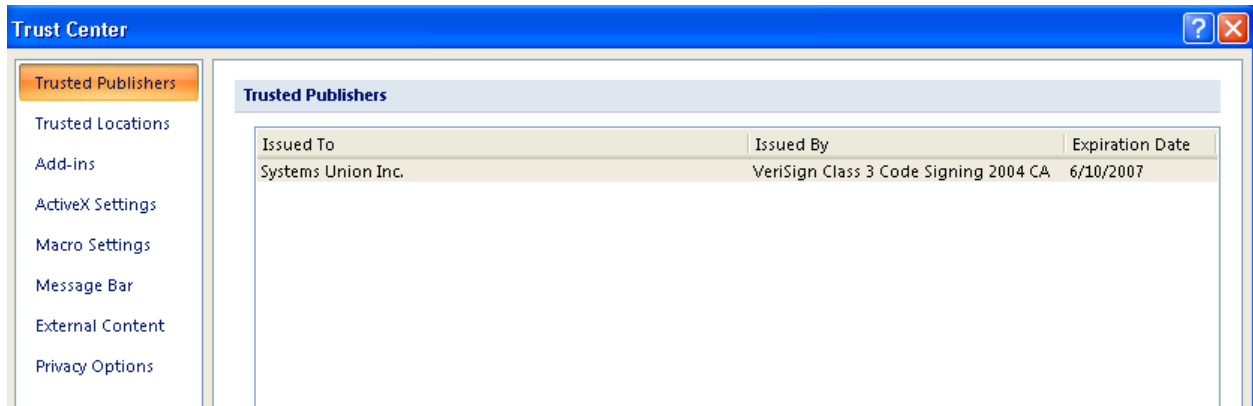


This will disappear next time when you start Excel

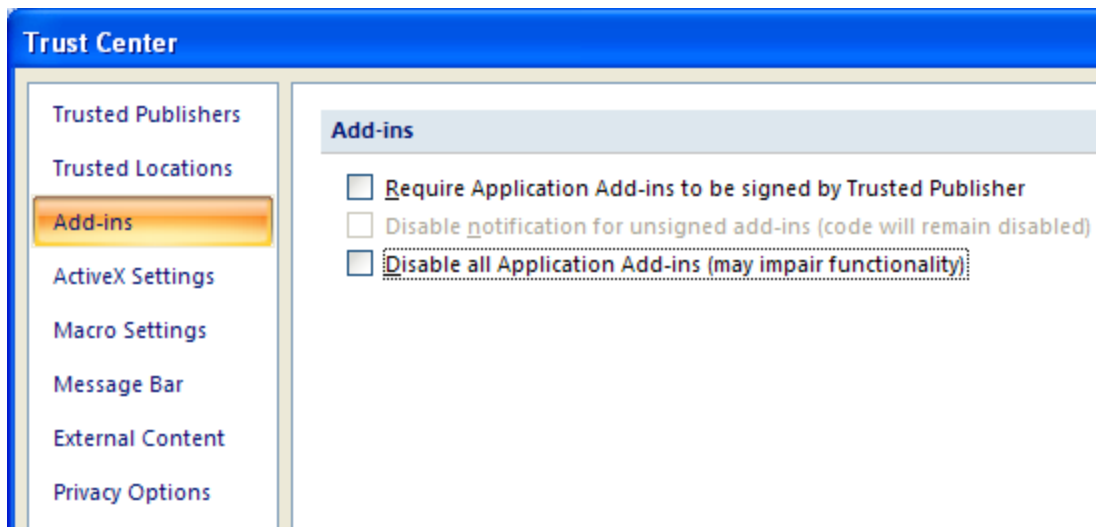
- 5) You will get the same warning message as at the beginning, with a difference that “Enable all code published with this publisher” is enabled now. Click on that button, and that will add F9 to Trusted Publishers:



6) In **Trust Center** under **Trusted Publishers**, F9 should now be listed as:




7) In the **Trust Center** window, click on **Add-ins** and make sure that the check box 'Disable all Application Add-ins' is **not checked**:



8) Close Excel. Now, if you do not want F9 to be auto attached, you can open Excel and remove F9 from auto attaching Add-ins.

Trusted Locations:

You should also add the F9 folder to **Trusted Locations**.

- 1) Click the **Microsoft Office Button**  , and then click **Excel Options**.
- 2) Click **Trust Center**, and then **Trust Center Settings**.
- 3) Click on **Trusted Locations**, then **Add New Location** and browse to the F9 folder.

Trust Center

Trusted Publishers
Trusted Locations
 Add-ins
 ActiveX Settings
 Macro Settings
 Message Bar
 External Content
 Privacy Options

Trusted Locations

Warning: All these locations are treated as trusted source for opening files. If you change or add a location the new location is secure.

Path	Description
User Locations	
C:\f9v40\	
C:\Program Files\Microsoft Office\Templates\	Excel 2007 (Beta) default location: Application Templates
C:\...iles\Microsoft Office\Office12\STARTUP\	Excel 2007 (Beta) default location: Office StartUp
C:\...plication Data\Microsoft\Excel\XLSTART\	Excel 2007 (Beta) default location: User StartUp
C:\...Files\Microsoft Office\Office12\XLSTART\	Excel 2007 (Beta) default location: Excel StartUp
C:\...c\Application Data\Microsoft\Templates\	Excel 2007 (Beta) default location: User Templates
Policy Locations	

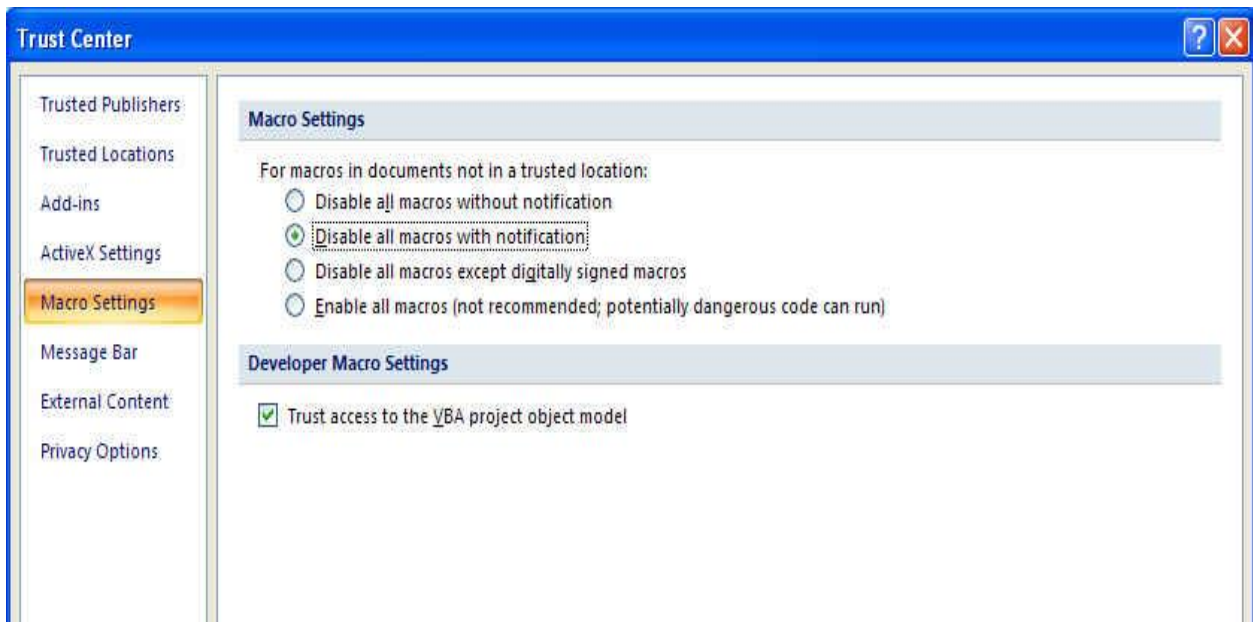
Path: C:\f9v40\
 Description:

Date Modified: 9/29/2006 1:00 PM
 Sub Folders: Disallowed

Allow trusted locations on my network (not recommended).

Macro Settings:


- 1) It is not recommended to change **Macro Settings** to Enable All Macros.
- 2) F9 is working properly with **Macro Settings** for: (Default) 'Disable all macros with notification' and 'Disable all macros except digitally signed macros'.
- 3) Make sure that check box **Trust Access to the VBA project object model** is checked:



Using F9 reports created in Excel 2007 with previous versions of Excel:

To share an Excel report file with F9 formulas created in Office 2007 with previous versions of Excel, please ensure:

1) Calculation is turned to Manual:

- Click the **Microsoft Office Button** , and then click **Excel Options**.
- At the bottom of the window choose **Excel Add-Ins** and click on 'Go' button.
- Click on **Formulas** and choose **Manual** under **Calculation Options**.

2) Save the Workbook as a **Excel 97- 2003 Workbook**.

Now it is possible to open the same Workbook in the previous versions of Excel and work with F9 formulas.

Alternatively, there is a downloadable Microsoft Office Compatibility Pack for Excel from www.microsoft.com.